

Intro to Science & Quality

Prepared for Emerging Faculty

September 2014

Julia Chang, VP Science & Quality

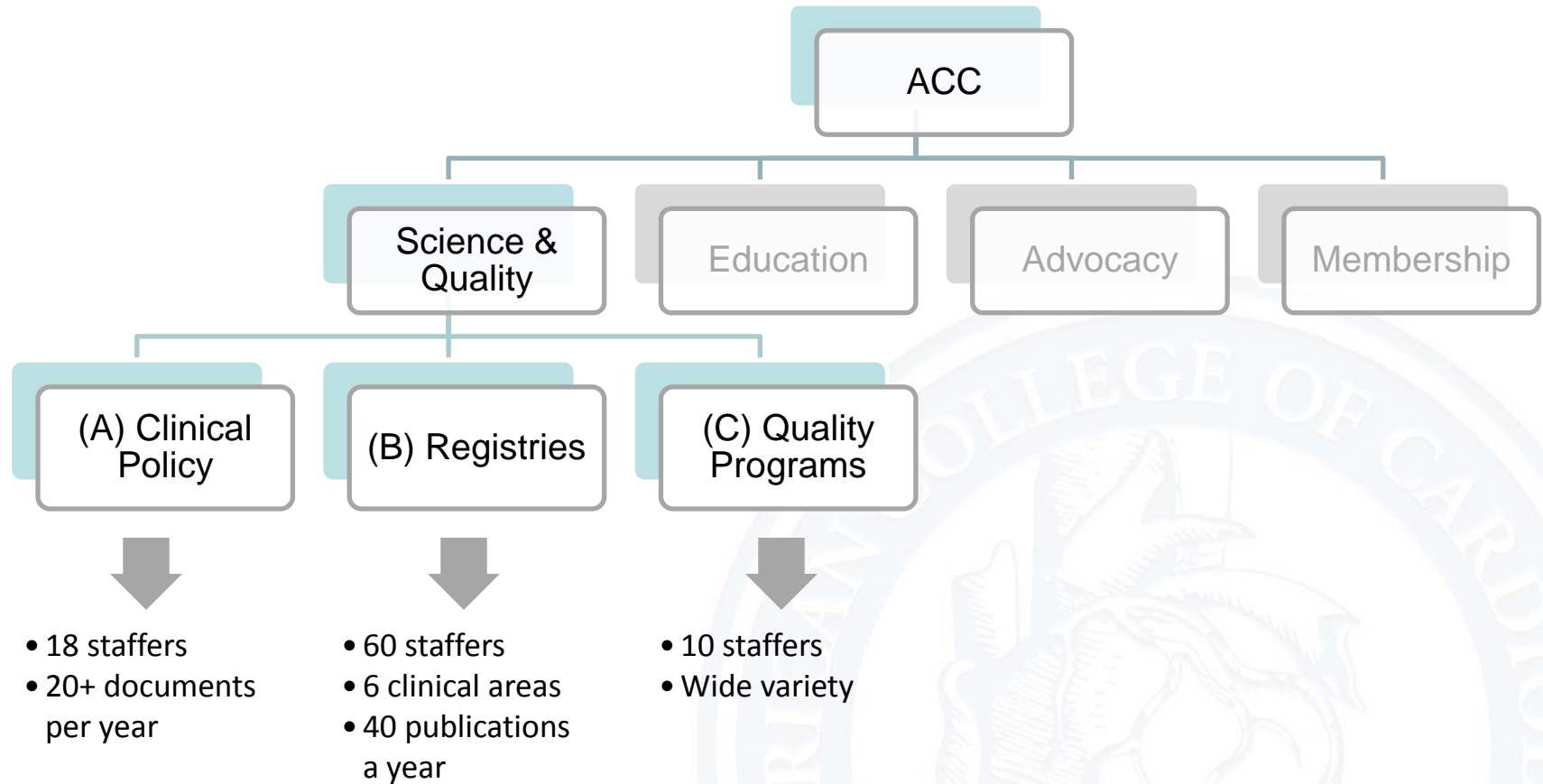
jchang@acc.org



*Helping Cardiovascular Professionals
Learn. Advance. Heal.*

Science & Quality

A division within the College



*Helping Cardiovascular Professionals
Learn. Advance. Heal.*

(A) Clinical Policy

Setting the standard of care

ACC Document Development

Official ACCF Policy Documents

Non-Policy

Clinical Policy

- 1) Appropriateness Criteria
- 2) Clinical Alerts
- 3) Competence & Training
- 4) Data Standards
- 5) Expert Consensus Documents
- 6) Guidelines
- 7) Health Policy Statements
- 8) Performance Measures

Advocacy

- Letters & Comments to FDA and CMS
- Letters supporting legislation and research
- Formal Advocacy Position – may be published

Communications

- Public Health Alerts
- Public Statements

Other Committees

- Data-Driven Articles
- Committee Opinions/ Memos
- Conference Proceedings
- Endorsed Documents
- JACC White Papers



*Helping Cardiovascular Professionals
Learn. Advance. Heal.*

(A) Clinical Policy

How to get involved...

Email Charlene May
lbradfield@acc.org

- Brave souls with time and energy to do the heavy lifting, e.g., writing, reviewing evidence, and creating evidence tables
- Relationship with Industry (RWI) assessment
- Technical expertise



*Helping Cardiovascular Professionals
 Learn. Advance. Heal.*

Clinical Policy Documents - Partial List

Institutional and Operator Requirements for Transcatheter Valve Replacement and Repair	Competence Statement
Appropriate Utilization of Imaging for Chest Pain in the ED	Appropriate Use Criteria
Appropriate Utilization of Imaging (AUI) for Heart Failure	Appropriate Use Criteria
Pediatrics	Data Standards
Electrophysiology (Update)	Data Standard
Heart Failure Guideline Full Text (e-only)	Guideline
Comparative Effectiveness Research Advocacy	Health Policy Statement
Patient Radiation Safety	Expert Consensus Doc
Requirements for Device Approval	Health Policy Statement
Cardiac Diagnostic Imaging	Performance Measures
Use of Diagnostic CV Imaging	Health Policy Statement
ICD BiV	Appropriate Use Criteria
Multimodality	Appropriate Use Criteria
Methods Appropriate Utilization of Imaging	Appropriate Use Criteria
Provider Radiation Safety (update)	Expert Consensus Doc
UA/NSTEMI Full Revision (Full Text)	Guideline
Valvular Heart Disease Full Revision (Full Text)	Guideline
AF Full Revision (Full Text)	Guideline
Peripheral Vascular Ultrasound and Physiological Testing: Part II	Appropriate Use Criteria

(B) Registries

Measuring process and outcomes

Name	Disease or Device	Facility Services	Sites	Patient Records
CathPCI	Percutaneous coronary interventions	Cath Lab	1500	13,000,000
ICD	Implantable cardioverter defibrillators	EP Lab	1600	600,000
ACTION-GWTG	Acute coronary syndrome	Emergency	700	300,000
CARE	Carotid artery revascularization	Cath Lab Surgical	170	15,000
IMPACT	Congenital heart disease	Cath Labs w/ Congenital Service	50	7000
PINNACLE	Coronary artery disease, heart failure, atrial fibrillation, hypertension	Outpatient	1200 physicians	3,000,000



*Helping Cardiovascular Professionals
Learn. Advance. Heal.*

(B) Registries

How to get involved...

Easy

- Go to LinkedIn
- Search for "NCDR Research Network"
- Click on "Join Group"
- You'll also be accepted into its parent group, ACC, if you are not already a member

Medium

- Submit research proposal at www.ncdr.com/research
- Proposals are competitively scored
- If selected, ACC's analytic center runs analysis
- You'll write manuscript

Hard

- Self-nominate to serve on a Research & Publications Subcommittee
- Email registry name, CV, brief 2-3 sentence statement of interest to ncdrcommittees@acc.org



(C) Quality Programs

Closing gaps with CardioSource Clinical Communities

Check out a Clinical Community

<http://www.cardiosource.org/Science-And-Quality/Clinical-Communities.aspx>

Email Helene Goldstein (hgoldste@acc.org) who is seeking Associate Editors and Contributors for cases, review articles, expert opinions and latest news

- Anticoagulation Management
- Atrial Fibrillation
- Cardiac Biomarkers
- Cardiac Rhythm Management
- Cardiometabolic Disease
- Chronic Angina
- Dyslipidemia
- Interventional Cardiology
- Sleep Apnea and Cardiovascular Disease

Anticoagulation Management
A CardioSource Clinical Community

Username Password
[Register](#) [Forgot My Password](#)

[Home](#) [Basics of Anticoagulation](#) [Article of the Month](#) [Case Challenges](#) [Hot Topics](#) [Video](#) [News](#) [Resc](#)

Wednesday, September 24, 2014 | CardioSource.org

Editors: [Editorial Board](#)

The views & opinions expressed are those of the contributing authors and editors and do not necessarily represent the views of the ACC.
[More](#)

Hot Topic
Dr. Antonio Gutierrez considers the use of anticoagulant therapy for secondary prevention in the PAD population.
[More](#)

The Use of Anticoagulants in Peripheral Arterial Disease

Latest News [More »](#)

Question of the Month
Poll Results: 108 Votes



*Helping Cardiovascular Professionals
Learn. Advance. Heal.*